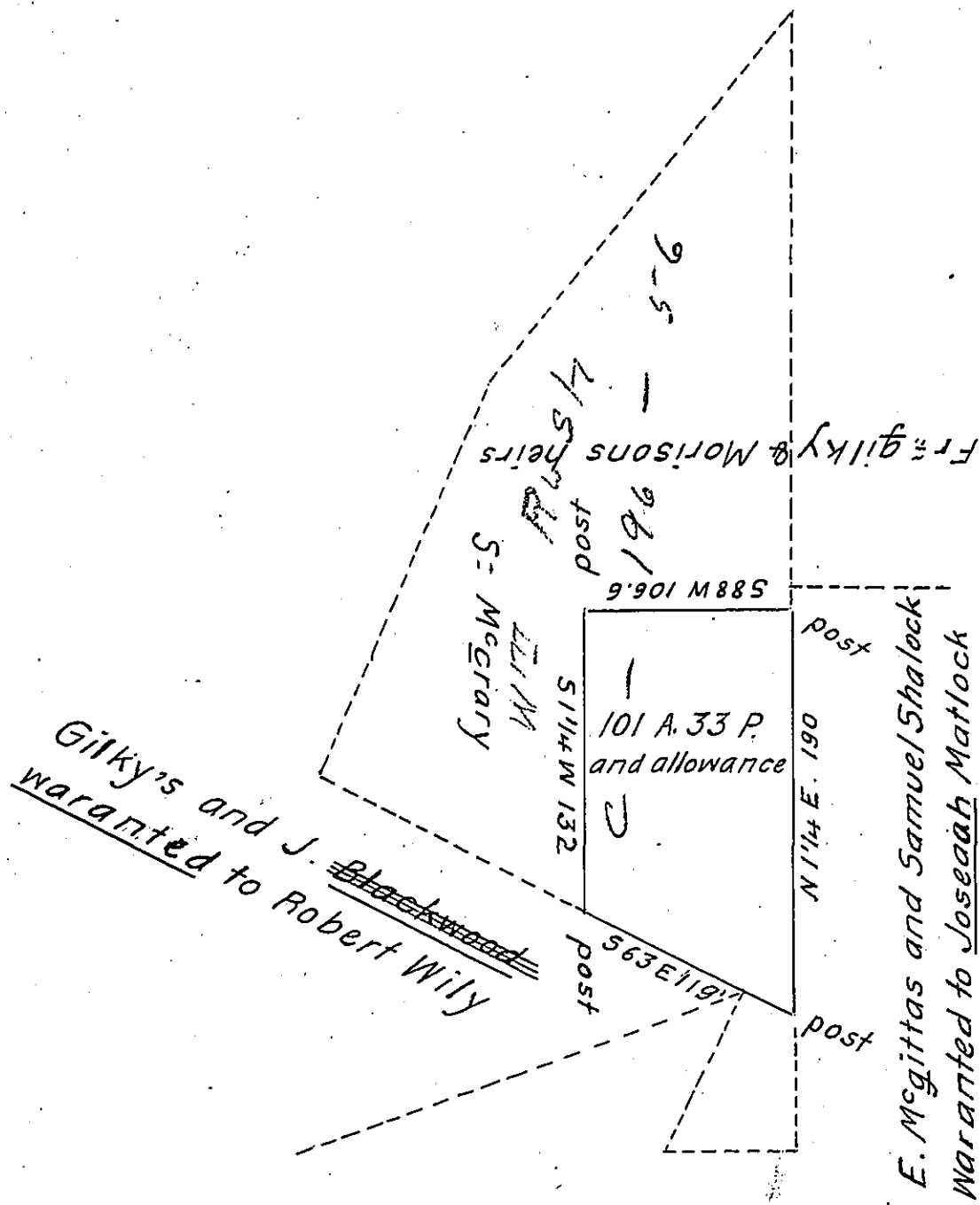


On
Lawrence



The above Draft in black lines Represents a part of a Tract of land (the Whole tract Contains 400 acres and was granted to William Rush by warrant dated April the 14th A.D. 1792) Resurveyed August 12th A.D. 1846, for Philip Young on his ^{actual} settlement and improvement situate in Big Beaver Township Beaver County, Adjoining lands as above described Containing one hundred and one acre and 33 perches and allowance of Six per Cent
 To the Hon John Laport _____ Samson S Nye D.S.
 S. g. o. Pa.

IN TESTIMONY that the above is a copy of the original remaining on file in the Department of Internal Affairs of Pennsylvania, made conformably to an Act of Assembly approved the 16th day of February, 1833, I have hereunto set my Hand and caused the Seal of said Department to be affixed at Harrisburg, this twenty seventh day of August 1904

George P. Brown
 Secretary of Internal Affairs.